

WRE Bulletin 1

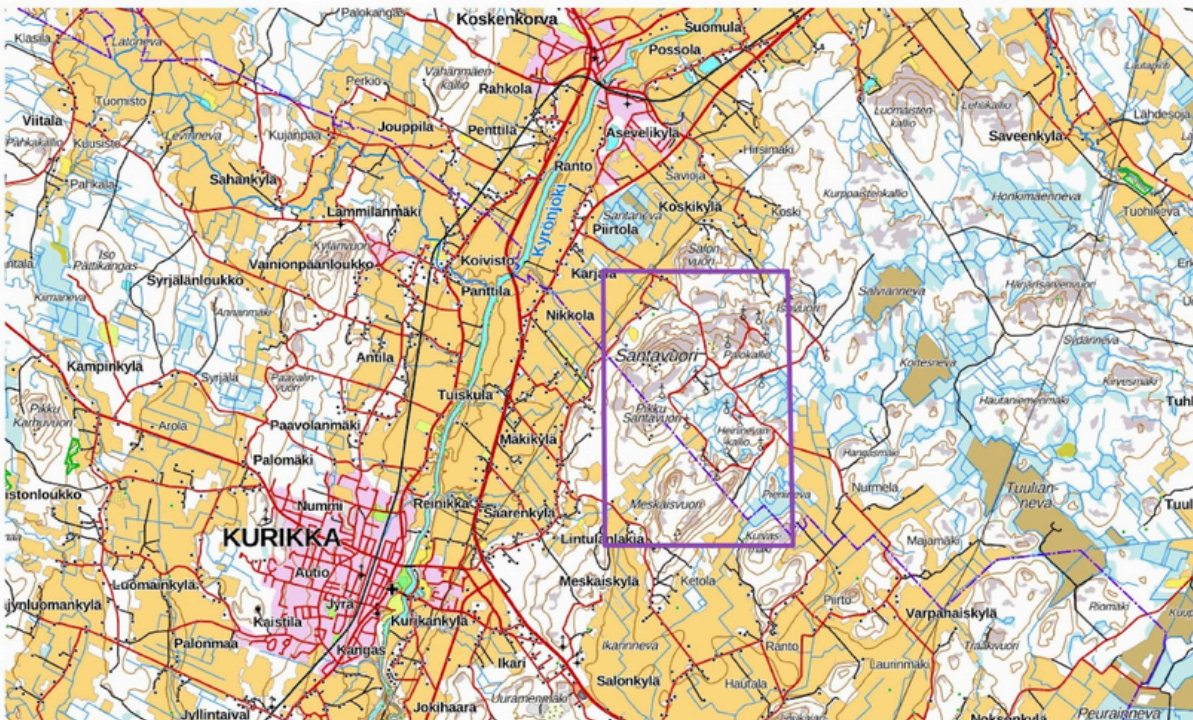
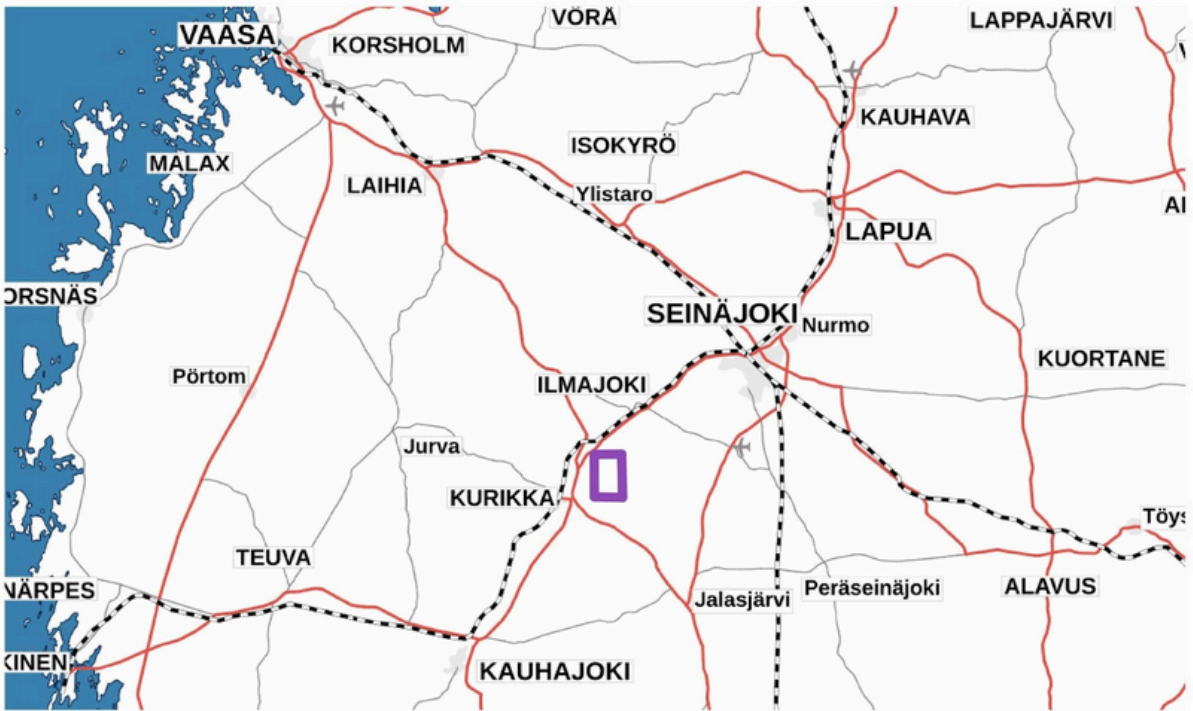


Welcome to the FinnSpring Long Distance Orienteering Competition that will be held in the region of Ostrobothnia in the terrains of Ilmajoki and Kurikka on 27 April 2024. The competition also serves as a World Ranking Event (WRE).

The competition centre is located in the Santavuori windmill park in the council of Ilmajoki. There is plenty of space for parking and all the competition facilities. Parking fee is 5 euros per day.

The competition is organised by Rasti-Kurikka ry and Rasti-Jussit ry.

General Maps of the region:



Competition

on 27 april 2024 Individual Competition, long distance

Classes and entry fees

WRE: M/W21E (39 euros)

In the WRE classes M/W21E, 60 competitors will be selected. Selection is made according to world ranking points dated 23 April 2024 (45 competitors/class) and final ranking of 2023 for long distance race (10 competitors/class) and also 5 competitors/class, that are selected by FOF's coaching management and approved by WR event adviser .

Starting order is according to the world rank score at entry date. The competitors that are not selected in classes M/W21E are transferred to parallel classes M/W21EB according to IOF's WRE rules. The main classes and possible parallel classes are all WRE competitions.

Others:

H/D20E, H/D18E ja H/D16E (28 euros)

Courses and estimated times

The estimated winning times are 88-92 min. The final course lengths will be published on the event website.

Competition rules

This event follows the rules of the Finnish Orienteering Federation, the IOF guidelines for World Ranking Events, the special rules for the Finnish

Championships issued for 2024, and the instructions given by the organisers. It is forbidden to use spike shoes; studded shoes are allowed.

Registration, latest date and address for entries

The deadline for entries is at midnight on 21 April 2024 through IRMA (<https://irma.suunnistusliitto.fi>). [Instructions in english for IRMA](#)

Non-Finnish participants without IRMA ID register via IOF Eventor (WRE classes M21, W21).

Non-Finnish participants who register for a WRE class through IOF's Eventor must pay their registration fees in euros to:

Account holder: Rasti-Kurikka ry

Bank name: POP Pankki

Bank address: Keskuspuistikko 7, 61300 Kurikka

IBAN: FI06 4726 0010 1946 65

BIC / SWIFT: POPFFI22

The deadline for participation fees is 21 April 2024.

Late registration by midnight on 23 April through the IRMA with the regular fee multiplied by 1.5.

In the event of any changes to registration information, please email: risto.kivinen@resultfellows.com

Information about travelling to Finland, visas etc. can be found from the web page of Finland's Ministry for Foreign Affairs.

<https://um.fi/entering-finland-and-travelling-abroad>



Description of terrain, climate and any hazards:

The competition terrain consists of wide bare rock hills and Finnish coniferous forests, with marks of forestry. There are 17 windmills in the area, and roads leading to platforms, but just a few trails. Visibility is mostly good, but there are also some thickets and flat sections where the compass may come in handy. Detailed hilltops and slopes with precipices may also prove to be a challenge. The Finnish Masters Relay was successfully held in the same terrain in 2016.

The end of April is usually moderately warm in Finland, depending on how the spring progresses. However, there is a possibility for low temperatures and some snow left in the terrain. Check the weather forecast before travelling.

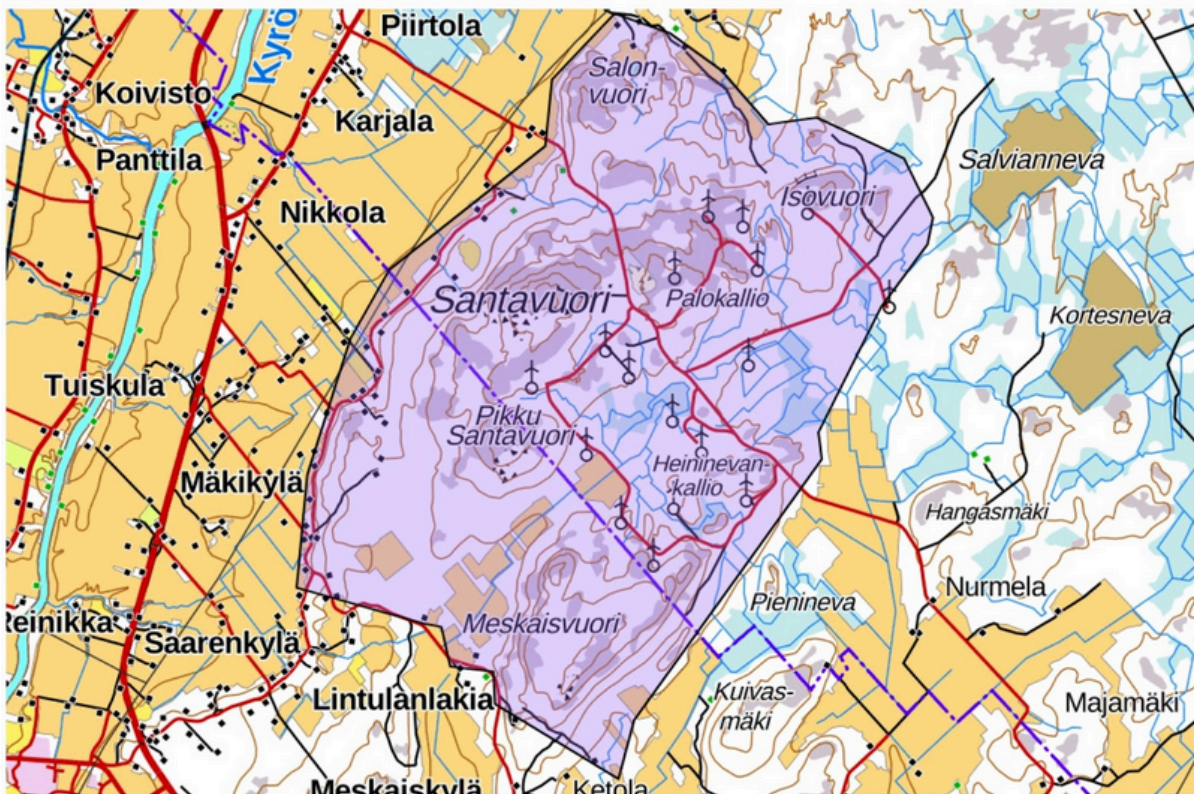
Information about the map:

The scale of the competition map is 1:15 000 for classes M/W21E.

The contour interval is 2.5 metres.

The map is made by Jussi Silvennoinen and revised by Ari Salonen. The map is offset printed (CMYK). The map will be printed in April 2024. The maps are in size A3 and are available in plastic cases.

Embargoed areas:



Event programme:

The first start of Saturday's competition starts at 11:00. The routes to the start zones are all under 1km and are published in competition information.

Training opportunities will be available nearby. The information about them is published later on the competitions website.

The punching system to be used:

The Emit punching system will be used. A rental card is reserved for competitors who have not entered an Emit card number at the time of registration. Rental cards are collected from the information point for a fee of 5 euros. The fee for unreturned cards is 95 euros.

Competitors who use the wrong punching card are disqualified. The competitors are responsible for using the Emit card marked on the start list.

Canteen

In addition to the competition facilities, the competition centre has a canteen/café services as well as retailers. The competition centre also serves lunch which costs ca 12 euros.

Awards

Prizes are awarded to the top three in all classes.

Accommodation

Information about accommodation and costs will be updated on the competitions website <http://2024.finnspring.net/>.

Organisation

Event Director: Heikki Koskela, tel. +358 40 590 4265, e-mail: heikki.koskela@maanmittauslaitos.fi

Main course setter: Esa Kuoppala, e-mail: kuoppalaesa@gmail.com

Information and media: Niko Savinainen +358 44 375 0888, e-mail: niko.savinainen@gmail.com

Course controller: Niko Latva, e-mail niko.latva@gmail.com

WRE event and technical adviser: Johan Uusimäki

Event website: <http://2024.finnspring.net/>

Rasti-Kurikka and Rasti-Jussit welcome you warmly to FinnSpring 2024!



Distances:

TAMPERE – Ilmajoki: 178 km / 2h 18 min

VAASA – Ilmajoki: 65 km / 52min

SEINÄJOKI – competition centre: 30 km / 28 min

KURIKKA – competition centre: 11 km / 13 min



Ilmajoki